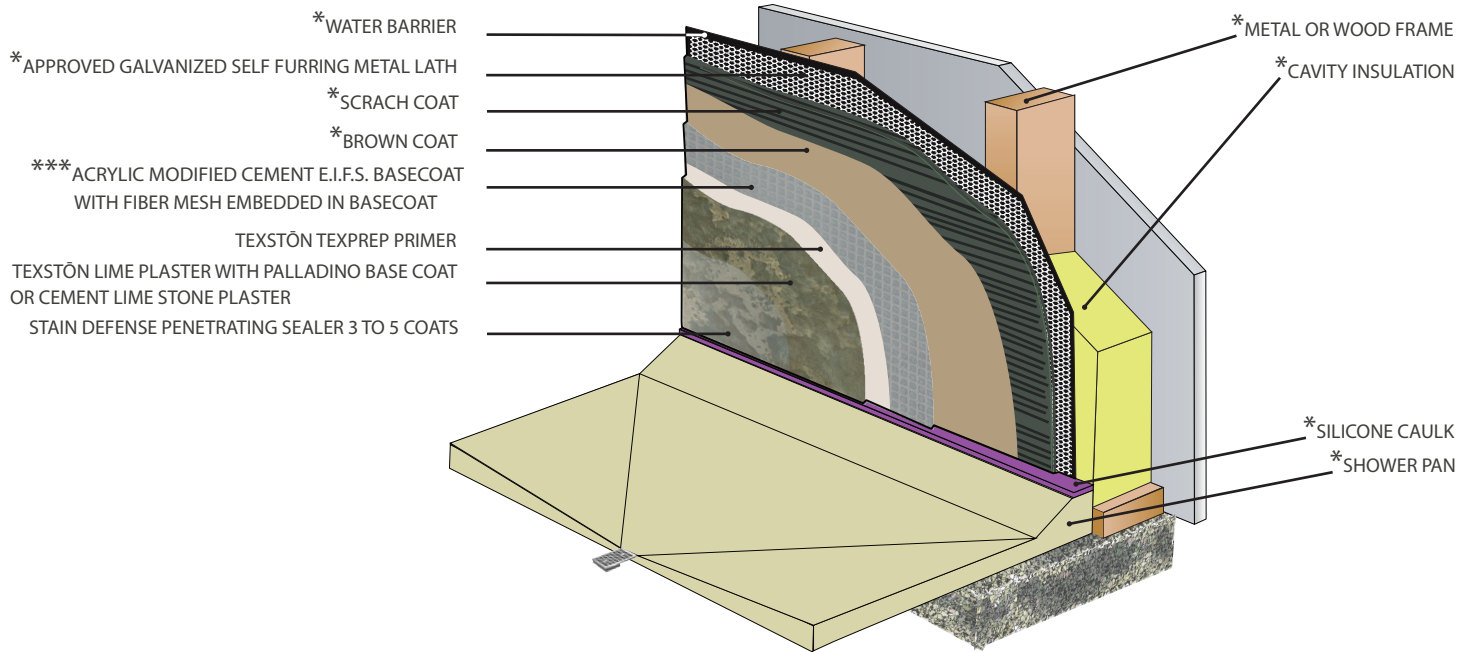
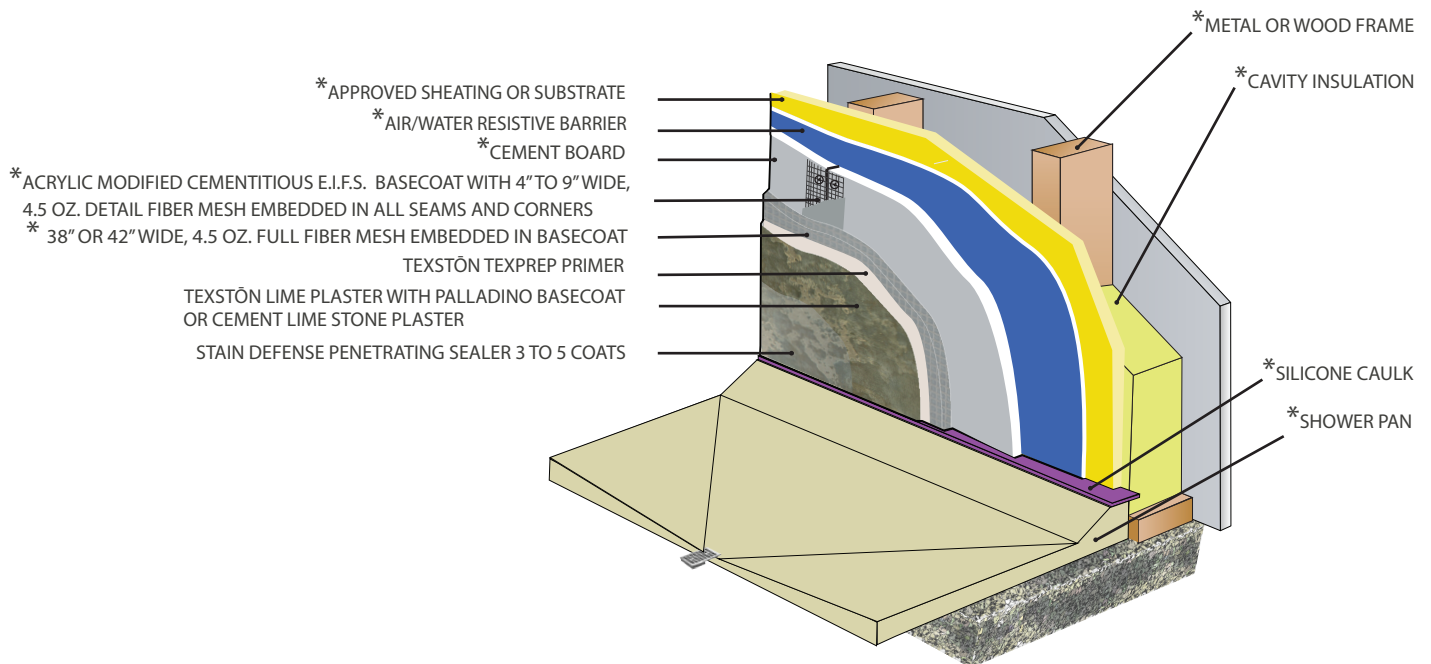


Shower Stall Textstōn Finishes Installation Detail For Hard coat and D.A.F.S. System

**Three Coat Conventional Hard Coat System



**D.A.F.S.-Direct Applied Finish Systems Over Cement Board or Approved Backerboard



*Supply by others

**This detail is for general information and guidance only. Textstōn products detail is the responsibility of the project's designer/Architect. All systems must comply with local building codes. This detail is subject to change. Textstōn specifically disclaims any liability for the use of this detail.

***Optional: In order to add strength and flexibility as well as to tremendously reduce the appearance of cracks in the finish coat