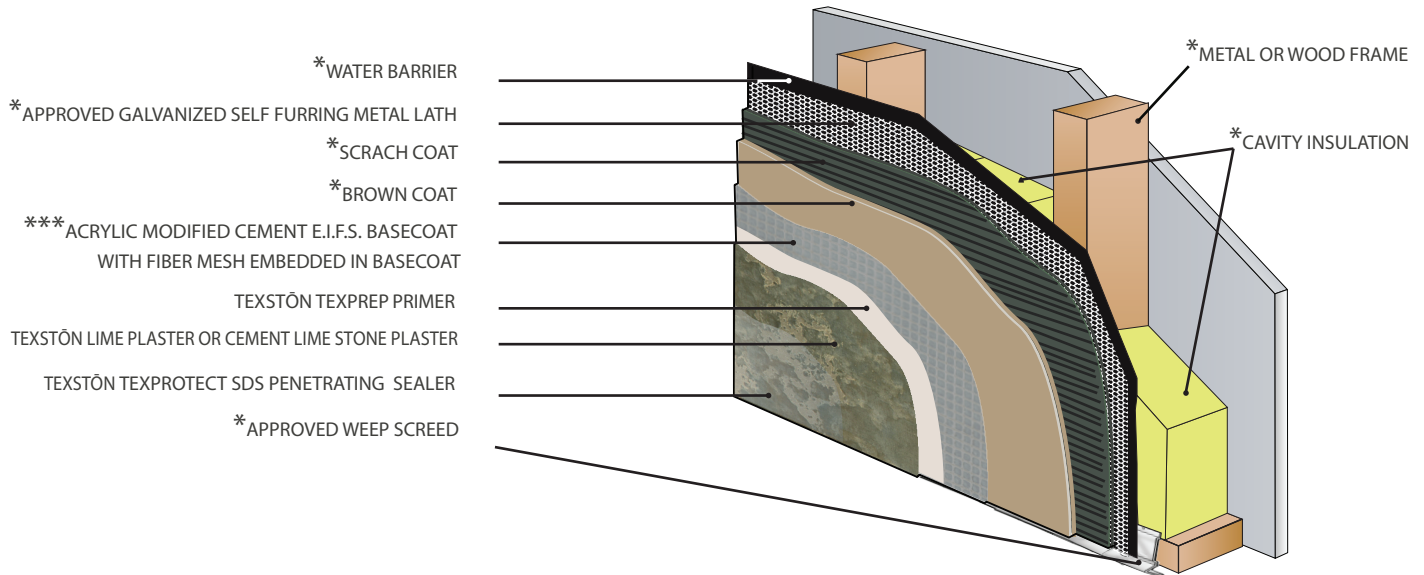
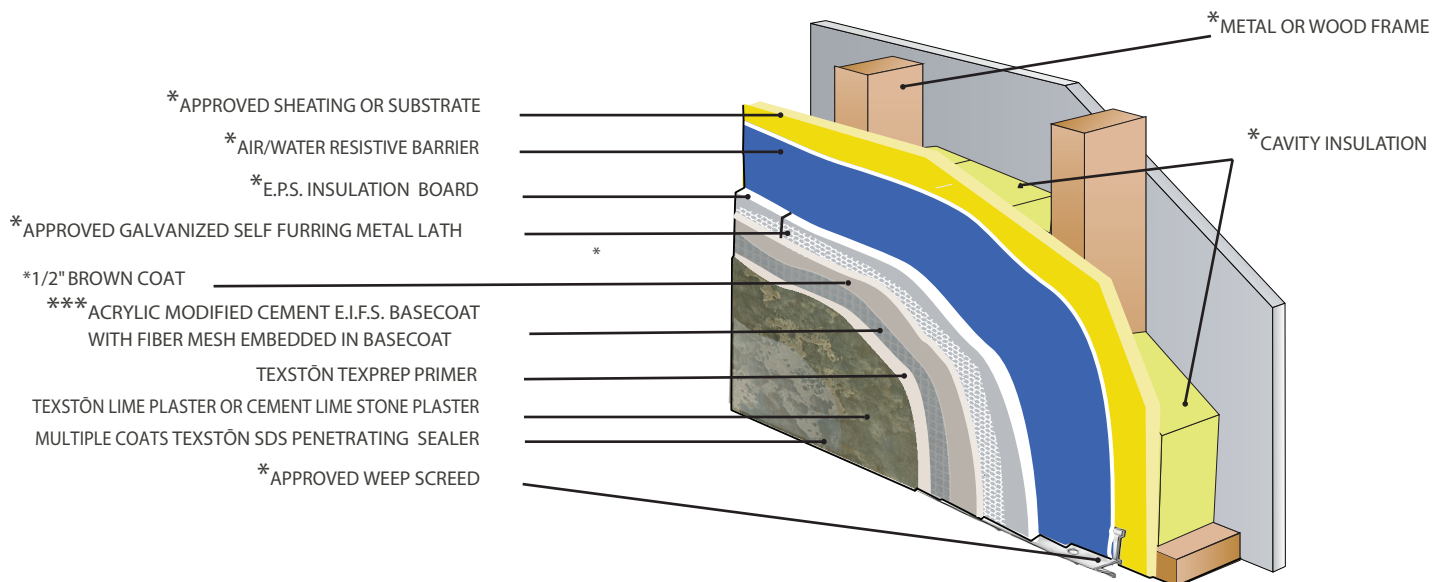


## Textstōn Finishes Installation Detail For Three and one conventional hard coat system

### \*\* Three Coat Conventional Hard Coat System



### \*\*One Coat Conventional Hard Coat System



\*Supply by others

\*\*This detail is for general information and guidance only. Textstōn products detail is the responsibility of the project's designer/Architect.  
All systems must comply with local building codes.  
This detail is subject to change.  
Textstōn specifically disclaims any liability for the use of this detail.

\*\*\*Optional: In order to add strength and flexibility as well as to tremendously reduce the appearance of cracks in the finish coat