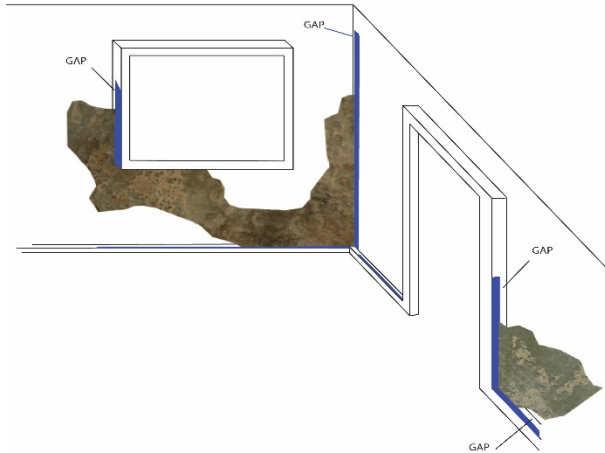


Taping method for Texstōn plasters

Creating a sharp, clean and straight plaster line at termination areas.

Option 1: Using an appropriate masking tape, like Scotch® Safe Release™ Weatherable Masking Tape, or similar. Tape off areas that are not going to be plastered such as doors and windows casing, baseboards and adjacent walls.

Diagram 1: In order to leave room for the plaster thickness, avoiding trapping masking tape



in between wall and object: Place and secure tape in a straight line over the objects away from the wall that going to be plastered. The gap needs to be as thick as the final finish thickness.

For

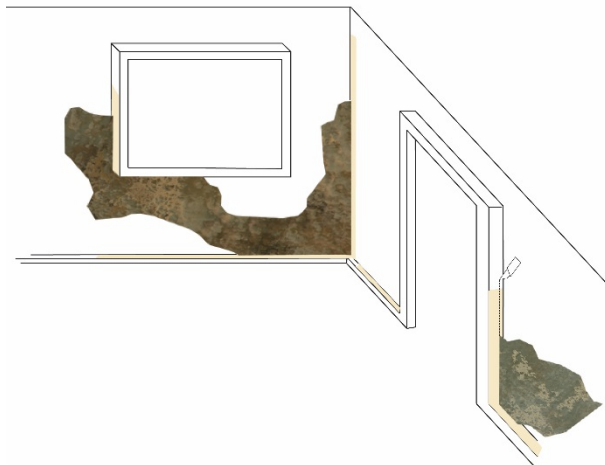
example:

- Veneciano, SilkStone: Leave an 1/32" gap.
- Marmorino, Palazzo, Antico, Terra: Leave 1/16" gap.
- Tuscany limestone cement plaster, Palladino: Leave 1/8" gap.

Apply plaster all the way to the tape. Fill up voids and compact plaster alongside the tape. Pull off tape on the same day when plaster is still green but set.

Option 2: In order to get a sharp and clean straight plaster line at termination areas: Use a

Diagram 2:



white/tan masking tape such as 3m General purpose masking tape or similar. Tape off doors and windows casing, baseboards and adjacent walls. Place and secure tape in a straight line over the objects touching the wall to be plastered without a gap, so the tape will be trapped between the plaster and the object. Apply plaster all the way to the tape and compact the plaster edge alongside the tape. Let the plaster dry and by the next day, use a sharp utility knife to cut out a straight line at the edge of the termination area. Pull off tape.

This option is faster and with less effort to achieve a sharp plaster termination line.

Texstōn Industries, Inc.

Offices & Showroom: 8025 Deering Ave., Canoga Park, CA 91304 Tel: 818-227-4812. Fax: 818-227-4852.
www.texston.com