

Shower, Steam and Tub Surround

Direct Applied Finish Systems (D.A.F.S.) Over Approved Wallboard

INSTALLATION GUIDE

This guide outlines the procedure for applying **Texston Finishes** over approved wallboards in wet environment applications, adhering to **ASTM C 1325** standards. Ensure all products are installed according to manufacturer guidelines and local building codes.

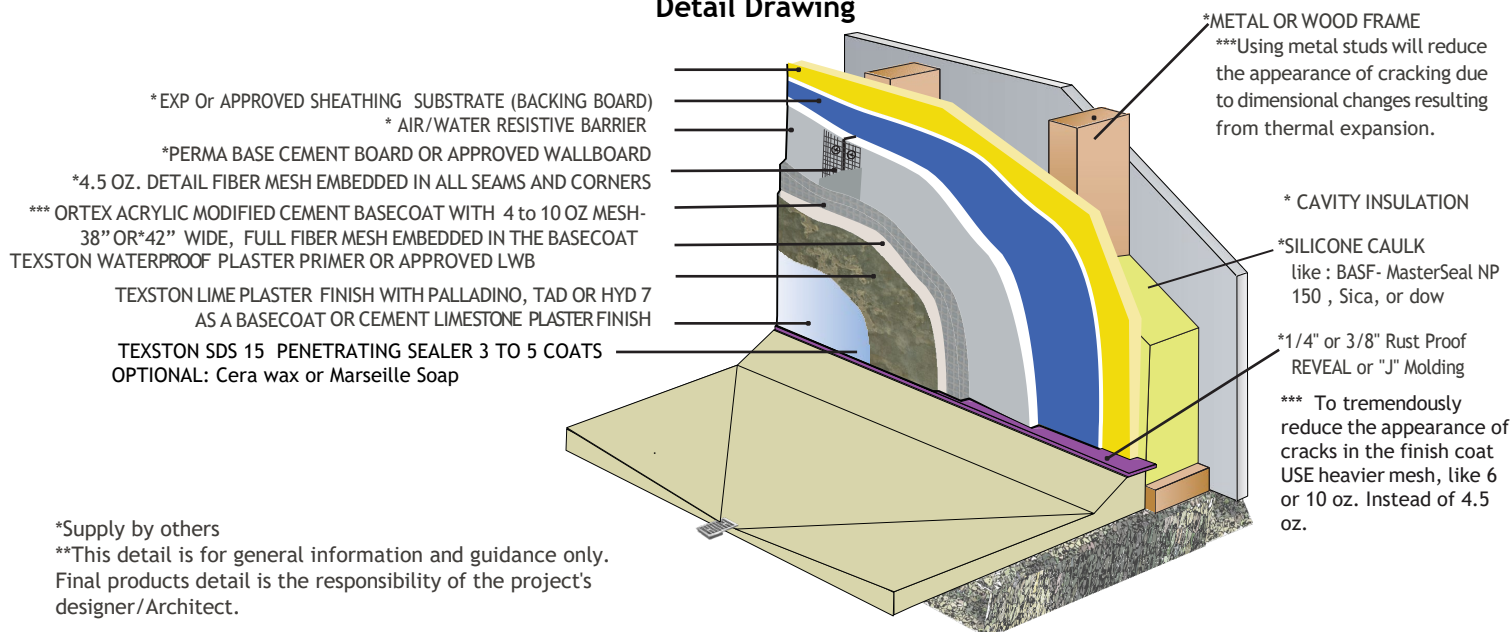
Application Steps

- 1. Framing Inspection:** Ensure framing meets tolerances, with studs spaced at 16" OC.
- 2. Backer-Board & WRB Installation:** Install ½" (or wider) backer-board (e.g., EXP, DensGlass) in a horizontal running bond pattern, staggering corner joints. Secure with rust-free screws. Apply an air/water resistive barrier (WRB), either paper-based or liquid-applied (LA-WRB).
- 3. Wallboard Installation:** Install ½" (or thicker) cement wallboard (e.g., PermaBase®) with a 1/8" gap between boards. Secure with rust-free screws every 6" to 8", staggering joints, ensuring back wrap mesh is exposed.
- 4. Detail Mesh & Embedding:** Apply 6" or wider, 4.5 oz. alkali-resistant mesh at wallboard terminations. Embed the mesh in **Texston ORTEX polymer-modified base and level coat** at all seams and corners. Skim 12" beyond the mesh. Spot fasteners with base coat. Level surfaces using a straight-edge to a tolerance of 1/8" to 1/4" per 10 feet. Use a Neoprene Float for tighter leveling.
- 5. Full Fiber Mesh Application:** Apply full field application of 38" or 42" wide, 4.5 oz. alkali-resistant fiber mesh (or 10 oz. for enhanced performance). Embed the mesh in the Ortex base coat, ensuring 2-1/2" overlaps. Skim 12" on either side of overlaps to ensure a flat finish, free of mesh outlines. If necessary, apply an additional base coat layer. Do not burnish.
- 6. Curing:** Allow the surface to cure for 24 to 48 hours.
- 7. Waterproof Primer Application & Finish System:** Apply two thin coats of Texston Waterproof PlasterPrimer with a trowel, allowing 24 to 72 hours to dry. Follow the Texston finish system step-by-step for application. Allow the final finish to cure for 24 to 72 hours.
- 8. Sealer Application & Backer-Rod/Sealant:** Apply 3 to 5 coats of Texston penetrating sealer SDS 15. Install backer-rod and sealant at all termination points for a watertight finish. **OPTIONAL:** Cera wax or Marseille Soap

Notes

- Ensure all structural loads (roof, drywall, floors) are in place before applying DAFS.
- floor is slanted enough, so no standing water will be performed.
- Niche for soap and shampoo bottles, recommended bottom side to be covered with tiles, not using plaster (Standing water will be trapped under the bottles)
- Use metal studs. If not, consider additional blocking bracing between studs can help minimize cracking.
- Heavier fiber mesh (6 or 10 oz.) improves durability and reduce the appearance of cracks in the finish coat

Detail Drawing



This detail is subject to change
Revised July 2025

Texston Industries, Inc.

Offices & Showroom: 8025 Deering Ave., Canoga Park, CA 91304 Tel: 818-227-4812.